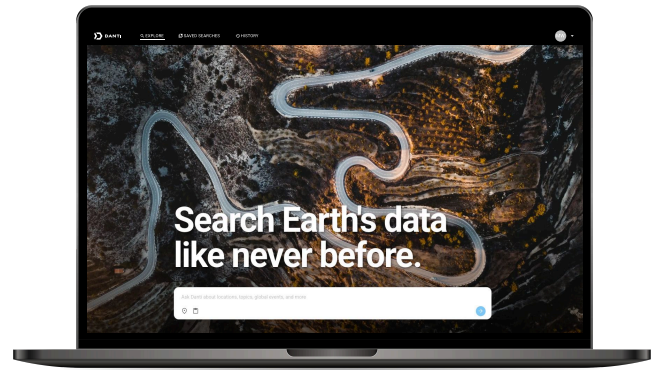


Quick Reference Guide

Get context about any location on the earth in seconds.

For additional help contact

support@danti.ai



Contents

Page 2 **Explore**

Learn all about Danti's multi-modal user interface.

Page 3 **Danti Search**

Learn key terms that help Danti find you the best results.

Page 4 **Filtering Results**

Refine your results for specific content and image types.

Page 5 **Map Basics**

Get the most out of the Maps experience.

Page 6 **Saved Searches**

Save and share collections of data.

Page 7 **Multi-location Search**

Create searches for multiple locations at once.

Explore

Danti's split screen view allows you to browse insights while maintaining context with the map.

The screenshot displays the Danti Explore web application in a split-screen layout. The left panel shows search results for "Denizli Wildfires October 2024", including a summary, imagery, news, social media, and fire categories. The right panel shows a map of the region. Annotations highlight various features:

- Query bar:** The top search bar with the Danti logo and navigation links (EXPLORE, SAVED SEARCHES, HISTORY).
- Your main search view:** The search results panel on the left.
- A place for saving searches and results:** The "Save Search" button.
- Access to old search queries:** The "HISTORY" link.
- Your account and other settings:** The "MM" profile icon.
- Categories of result types:** The tabs for Summary, Imagery, News, Social, and Fire.
- Multimodal "Bento Box" of results:** The grid of image and social media results.
- AI-driven insights:** The "Overview" section providing context on the wildfire.
- Map controls:** The map interface on the right, including zoom and layer controls.
- Interactive map:** The map showing the location of the wildfire.
- Multi-function, natural language search prompt:** The search bar at the bottom.
- Collapse the map:** The button to collapse the map.
- Type in the search bar for a general search:** The search bar at the bottom.
- Address search mode:** The location pin icon.
- Multi-location search mode:** The clipboard icon.
- Advanced search settings:** The filter icon.
- Click to search:** The search button.

Danti Search

Use search terms that align with the result you're looking for.

Location

COMMA SEPARATED COUNTRY/STATE/CITY PAIRINGS

"Los Angeles, California", "Paris, France", "British Columbia, Canada"

COMMA SEPARATED LATITUDE/LONGITUDE

"40.705272, -73.996182"

Time period

SPECIFIC DATE

"Tingri County Tibet January 7th 2025", "New Orleans 02/09/25"

SPECIFIC RANGE

"Hanoi September 7th - September 14th"

RELATIVE RANGE

"Washington DC Past 30 days", "Denmark past 5 months"

Topic, event, or natural disaster

NATURAL DISASTER

"Denizli Wildfires October 2024"

SPECIFIC EVENT

"Macy's Day Parade"

Combine terms to further refine

TOPIC + LOCATION

"Rail gauges in Ukraine"

LOCATION + EVENT/TOPIC + TIME WINDOW.

"Hanoi Typhoon Yagi September 2024"

You can also use the map to search

FILE

Upload a GeoJSON file

BY SHAPE

Draw a polygon, circle, square or search the visible map area

Filtering Results

Ask Danti about locations, topics, global events, and more.



Launch the advanced search filters from the search bar



Refine the scope of your initial search.

Filters

Edit your search result types

Uncheck a data type to exclude it from your search results.

☒ Images ☒ News ☒ Social Media ☒ Ships ☒ Fire ☒ Weather ☐ Property

Edit your image search options

Use the menus below to customize your image search results.

< January 2022 >

| | | | | | | |
|----|----|----|----|----|----|----|
| Su | Mo | Tu | We | Th | Fr | Sa |
| 26 | 27 | 28 | 29 | 30 | 31 | 1 |
| 2 | 3 | 4 | 5 | 6 | 7 | 8 |
| 9 | 10 | 11 | 12 | 13 | 14 | 15 |
| 16 | 17 | 18 | 19 | 20 | 21 | 22 |
| 23 | 24 | 25 | 26 | 27 | 28 | 29 |
| 30 | 31 | 1 | 2 | 3 | 4 | 5 |

Quality

5 cm and Better

5cm 10cm 15cm 30cm 1m 3m

Orientation

Select all Clear

Reset All Cancel Apply

Filters

Image filters

Cloud cover

>25%

0 Reset All 25 50 75 100

Camera Angle

15° off nadir or less

0 5 10 15 20 25 30 35 40 45 >45

Edit provider and sensor options

You can select which satellite providers and sensors best fit your needs below.

Providers

☒ Deselect All

- ☒ Blacksky
- ☒ CSPO
- ☒ GEGD
- ☒ Planet Labs
- ☒ Sentinel Hub
- ☒ Up42

Sources

☒ Deselect All

- ☒ Airbus
- ☒ Capella
- ☒ Hexagon
- ☒ Vexcel
- ☒ Blacksky
- ☒ ESA Sentinel

Platforms

☒ Deselect All

- ☒ Sentinel 1A
- ☒ Sentinel-2A
- ☒ Sentinel 2B
- ☒ Newsat7
- ☒ Newsat31
- ☒ PSS Dove

Sensors

☒ Deselect All

- ☒ Electro-optical (EO)
- ☒ Synthetic Aperture Radar (SAR)
- ☒ Multispectral

Reset All Cancel Apply

Sources, providers and sensors

Sort by Relevance

Filters

☐ 0 selected

1-25 of 1000 < >

Maxar default
12-12-2024 18:00 PDT
30cm
📍 38.89, -77.03

Maxar default
12-12-2024 18:00 PDT
30cm
📍 38.89, -77.03

Maxar default
12-12-2024 18:00 PDT
30cm
📍 38.89, -77.03

Maxar default
12-12-2024 18:00 PDT
30cm
📍 38.89, -77.03

Maxar default
12-12-2024 18:00 PDT
30cm
📍 38.89, -77.03

Maxar default
12-12-2024 18:00 PDT
30cm
📍 38.89, -77.03

Maxar default
12-12-2024 18:00 PDT
30cm
📍 38.89, -77.03

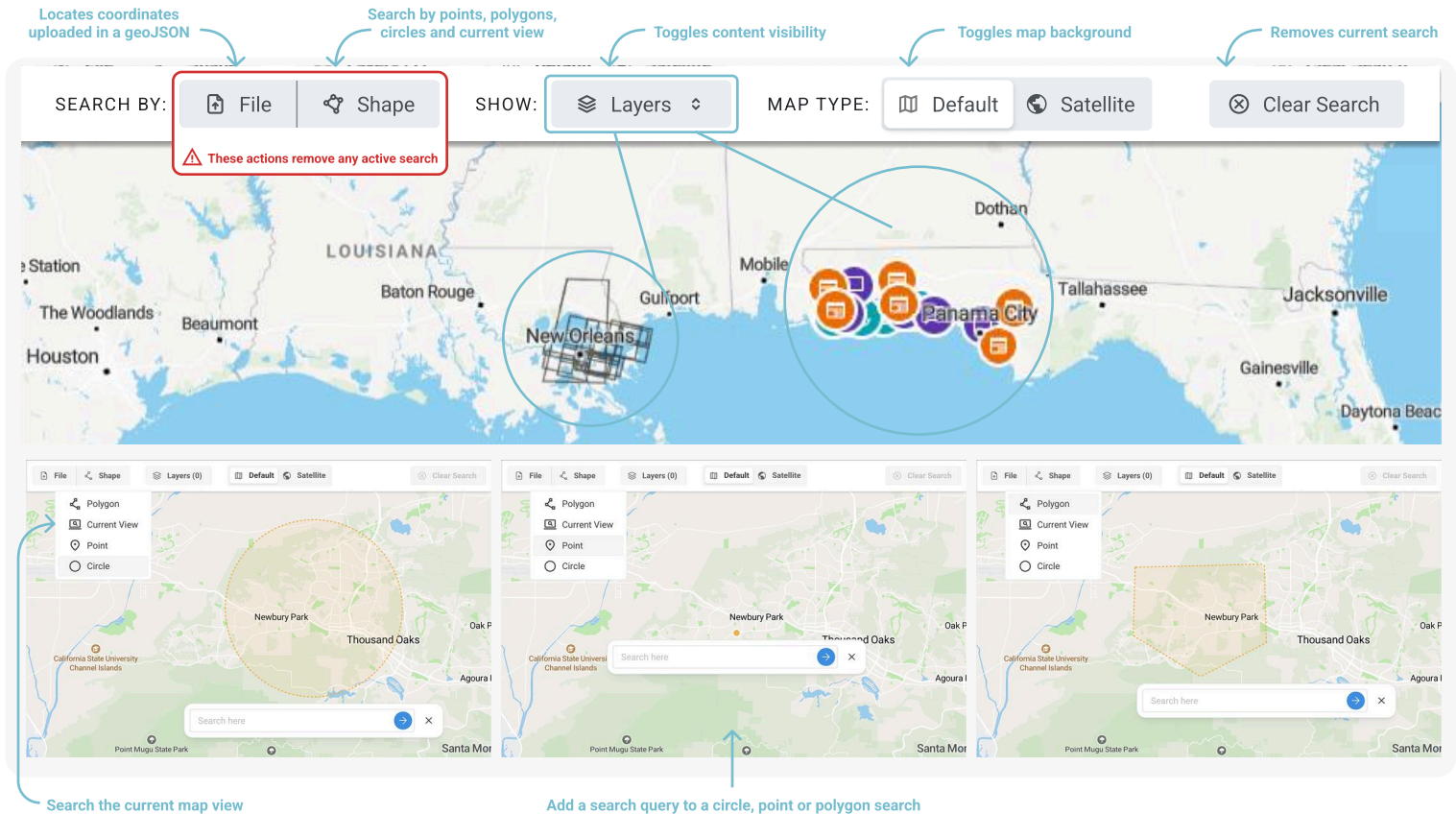
Maxar default
12-12-2024 18:00 PDT
30cm
📍 38.89, -77.03

Maxar default
12-12-2024 18:00 PDT
30cm
📍 38.89, -77.03

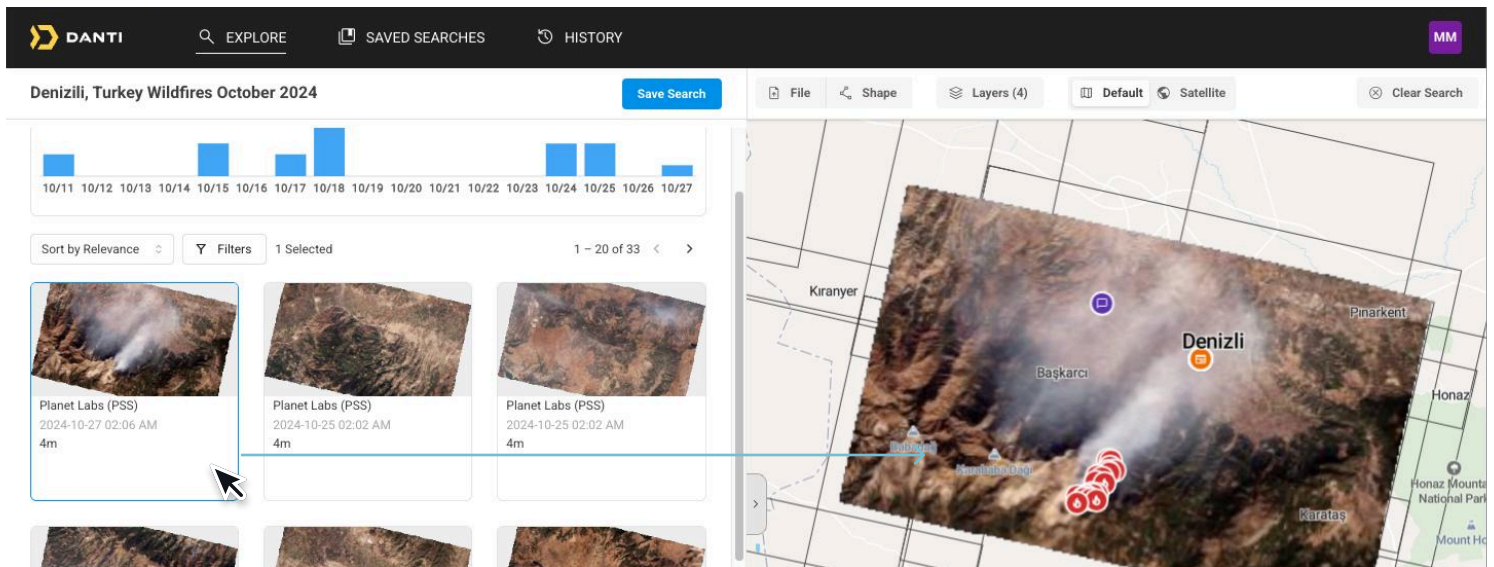
Maxar default
12-12-2024 18:00 PDT
30cm
📍 38.89, -77.03

Map Basics

Map controls



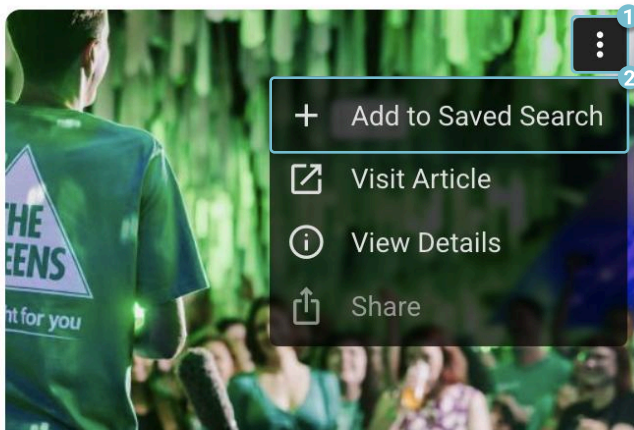
Click on an extent to locate it in the map (& vice versa).



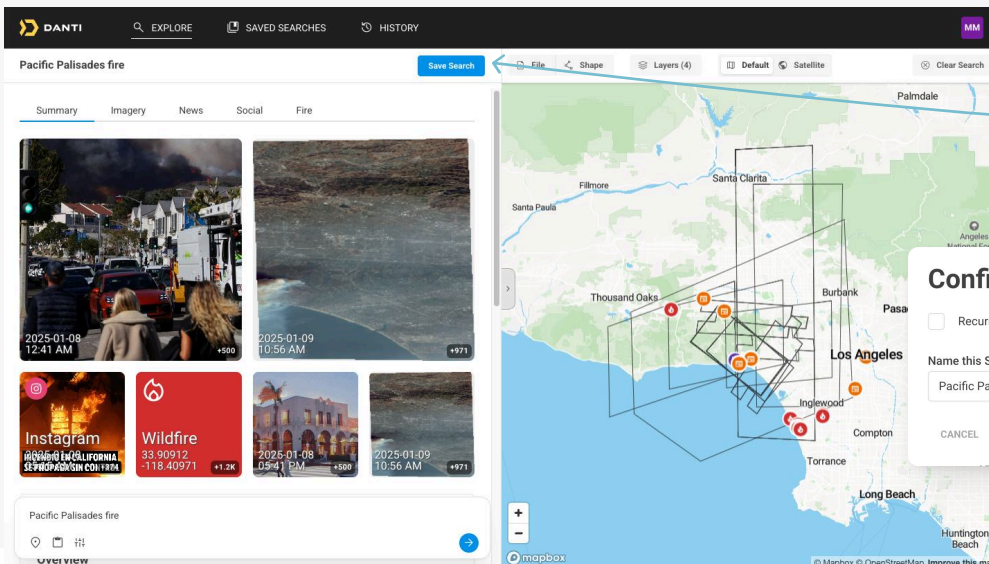
Saved Searches

Save individual search results to create unique collections.

Explore Page



Add all results to a saved search in a bulk action.



Save all results to an existing or new 'saved search'

Configure your Saved Search

☐ Recurring (check this box if you want this search to run automatically)

Name this Saved Search *

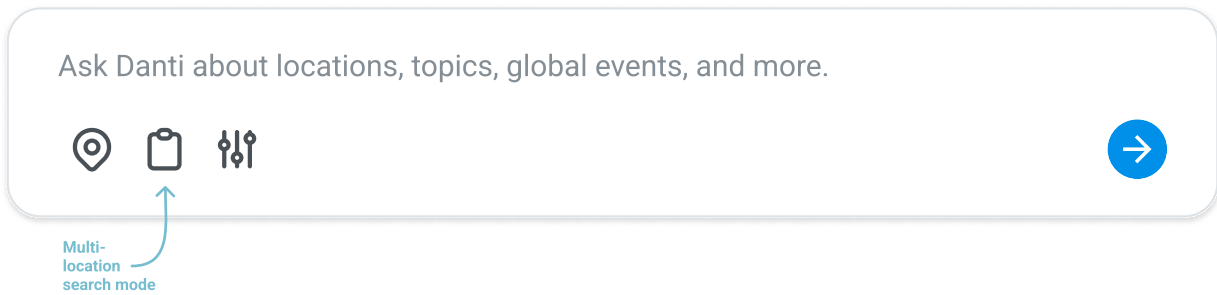
Pacific Palisades fire

CANCEL

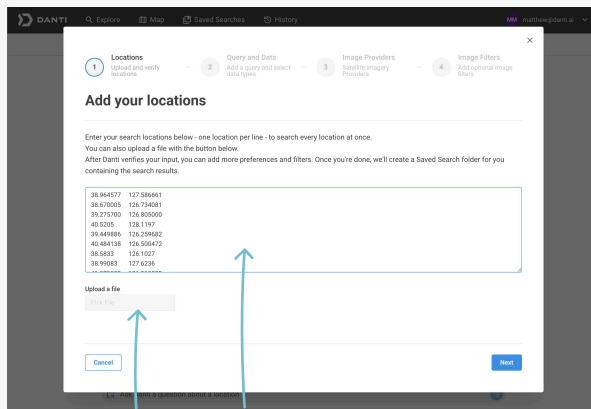
SAVE

Multi-location Search

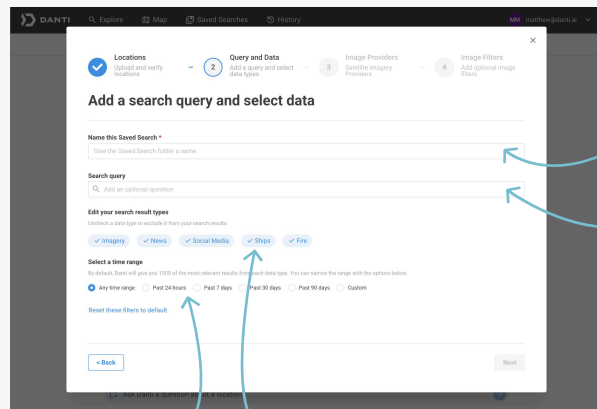
Search based on multiple locations.



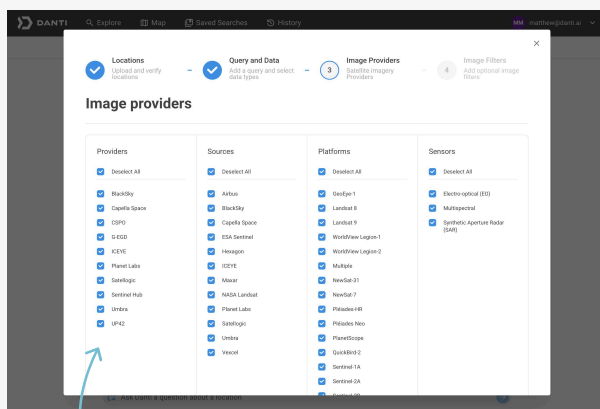
Manage your search's filters



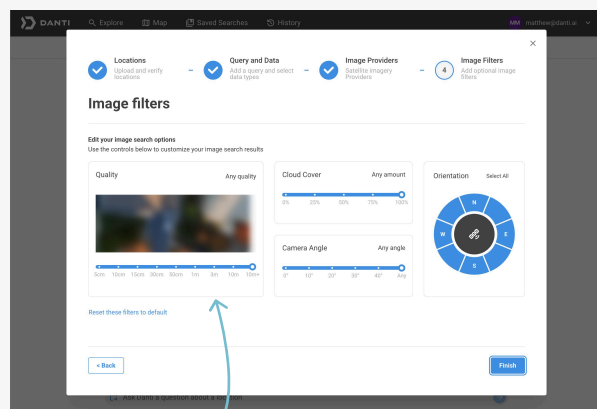
Upload a file OR Copy and paste latitude/longitude pairs or MGRS coordinates



Customize the time range Edit which data to include in the results



Select providers, sources, platforms and sensors for image results



Add image filters Finish

Need more help?

For additional help contact

support@danti.ai